



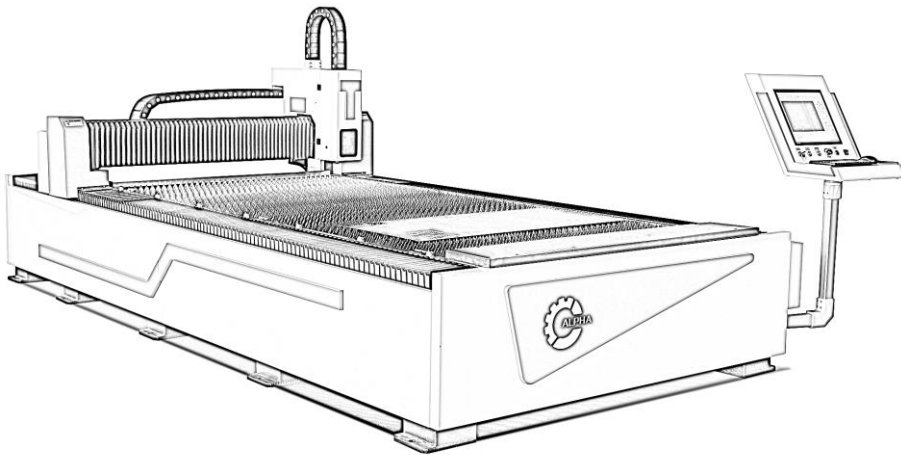
**Alpha CNC Group Pty Ltd**

21/2-4 Picrite Close, Pemulwuy NSW 2145

Phone: 02 9683 6117

Web: [www.alphacnc.com.au](http://www.alphacnc.com.au)

Email: [info@alphacnc.com.au](mailto:info@alphacnc.com.au)



# 3015ST/4015ST/6015ST Fiber Laser Cutting Machine

1.5KW-6KW Laser

**One-stop Supplier of Sheetmetal Machinery**

---

**Metal Mastery in Every Machine, Precision in Every Piece**

## Specifications:



Model	3015ST/4015ST/6015ST
Cutting Table Size	1500*3000/1500*4000/1500*6000mm
X-axis Travel	3000/4000/6000mm
Y -axis Travel	1500mm
Z -axis Travel	80mm
Laser Power	1.5KW/2KW/3KW/6KW
Positioning Accuracy	±0.05mm
Repetitive Accuracy	±0.03mm
Rapid Speed	80m/min
Power	3 Phase 415V/50Hz (32-50A per phase)
Machine Weight	2300KG/2900kg/3800kg
Dimension	4300/5300/7300*2670*1780mm
Laser Source	Raycus fiber laser 3KW/4KW/6KW
Laser Head	Boci/Raytools
CNC Controller	Cypcut - PC based CNC - easy integration into factory network
Cabinet Electrical Components	SIEMENS/Schneider
Machine Frame	3015/4015/6015ST
Water Chiller	Specialized for 1.5KW/2KW/3KW/6KW laser

## Features:

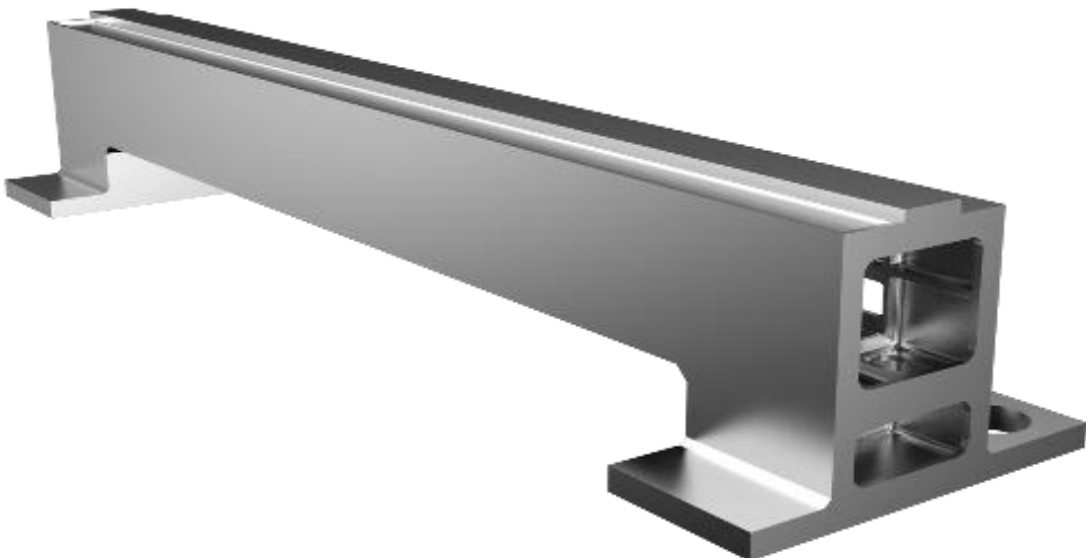
### Pipe Welding Frame

Whole machine is machined by high accuracy CNC gantry machine center, 600° C heat treatment has been done on the machine frame, which gives Alpha laser cutting machine a minimum 20 years life without mechanical distortion.



### Cast Aluminium Beam

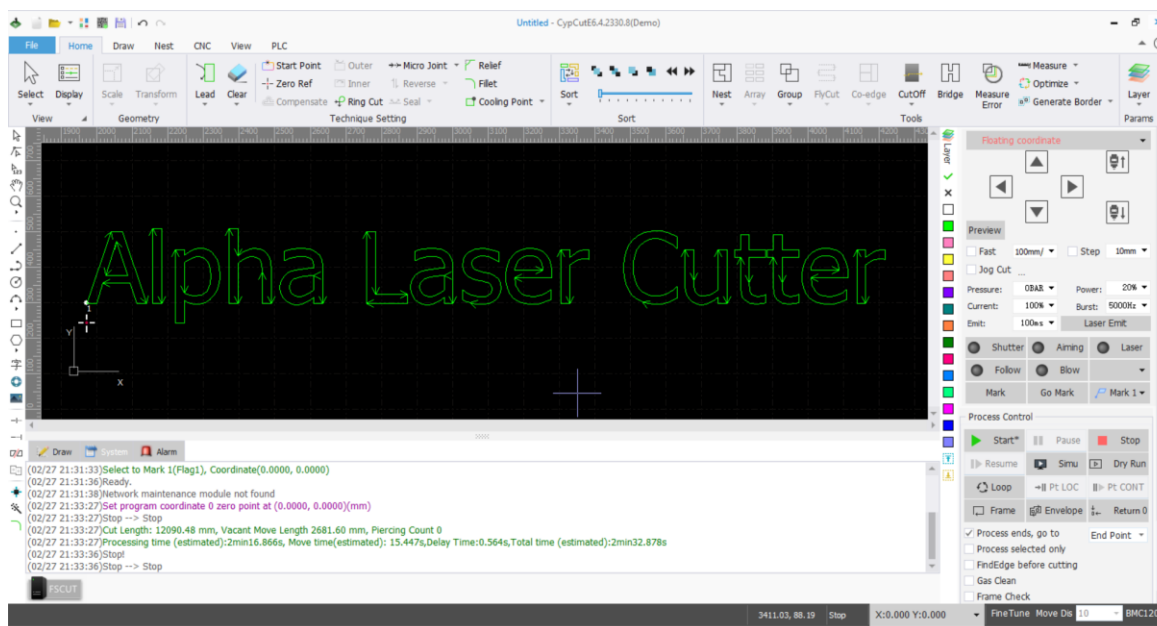
Light cast aluminium beam has been adopted to guarantee fast and high precision cutting



## Features:

### CypcutE CNC Controller

Friendless CypCutE 2D cutting software is for medium power EtherCAT cutting system. CypCutE is easy to use, rich in functions, stable and reliable. It has advanced functions such as Smooth MicroJoint, Speedy Piercing, integrated QR scanner and Circle Center Calibration to meet various processing needs.



### Boci BLT Laser Head

Cost-effective smart cutter that focuses on 2D, 3D and bevel cutting machine, delivers a great performance with stable cutting, simple installation and setup, available for power levels below 8KW.



- Stable and efficient cutting
- Easy to maintain, low cost to repair
- Anti collision protection
- Protective screws keep cutting head from damage
- Groups of internal sensors for real time close-loop monitor
- Rapid diagnosis with early warning message

## Application & Capability

### Materials:

Carbon steel - Stainless steel - Aluminum alloy – Brass – Copper - Galvanized Steel - Titanium

### Thickness:

0.5-20mm carbon steel - 0.5-14mm stainless steel - 0.5-10mm aluminium - 0.5- 6mm brass



### Industries:

Sheet metal manufacturing, Automobile, machinery manufacturing, elevator manufacturing, household appliances, kitchen and sanitary ware, signage, and other machinery manufacturing and processing industries.





## Cutting Parameters 1.5KW laser

\*\*\*red font parameter is not suitable for production cutting\*\*\*

Material	Thickness (mm)	Cutting speed (m/min)	Cutting Gas
Stainless steel	1	20	N2
	2	7	N2
	3	4.2	N2
	5	1.4	N2
	6	0.7	N2
Carbon steel	1	18	N2
	2	5	O2
	3	3.6	O2
	4	2.4	O2
	6	1.3	O2
	8	1.1	O2
	10	0.9	O2
	12	0.75	O2
	16	0.45	O2
Brass	1	14	N2
	2	4.5	N2
	3	1.4	N2
Aluminum	1	18	N2
	2	5.7	N2
	3	2.5	N2
	4	0.7	N2

## Cutting Parameters 3KW laser

\*\*\*red font parameter is not suitable for production cutting\*\*\*

Material	Thickness (mm)	Cutting speed (m/min)	Cutting Gas
Stainless steel	1	40	N2
	2	22	N2
	3	10	N2
	4	6	N2
	6	2.5	N2
	8	1.1	N2
	10	0.8	N2
Carbon steel	1	33	N2
	2	18	N2
	3	4	O2
	4	3.5	O2
	6	2.5	O2
	8	2.1	O2
	10	1.4	O2
	12	1.0	O2
	14	0.8	O2
	16	0.7	O2
	20	0.5	O2
Brass	1	26	N2
	2	14	N2
	3	6	N2
	5	2.0	N2
Aluminum	1	32	N2
	2	16	N2
	3	7.5	N2
	4	5.5	N2
	5	3	N2

## Cutting Parameters 6KW laser

\*\*\*red font parameter is not suitable for production cutting\*\*\*

Material	Thickness (mm)	Cutting speed (m/min)	Cutting Gas
Stainless steel	1	50	N2
	2	30	N2
	3	15	N2
	4	10	N2
	6	5	N2
	8	3.8	N2
	10	2	N2
	12	1.4	N2
	14	1.0	N2
	16	0.55	N2
Carbon steel	1	45	N2/Air
	2	25	N2/Air
	3	14	N2/Air
	4	8	N2/Air
	6	5	N2/Air
	3	4	O2
	4	3.5	O2
	6	2.7	O2
	8	2.2	O2
	10	2.0	O2
	12	1.8	O2
	14	1.4	O2
	16	1.2	O2
	20	0.65	O2
		25	0.5
Brass	1	38	N2
	2	18	N2
	3	11	N2
	4	7.8	
	6	3.4	N2
Aluminum	1	43	N2
	2	22	N2
	3	13	N2
	4	8	N2
	5	5	N2
	6	3.5	N2
	8	1.7	N2
	10	1.1	N2
	12	0.6	N2



## Alpha CNC Group Pty Ltd

21/2-4 Picrite Close, Pemulwuy NSW 2145

Phone: 02 9683 6117

Web: [www.alphacnc.com.au](http://www.alphacnc.com.au)

Email: [info@alphacnc.com.au](mailto:info@alphacnc.com.au)

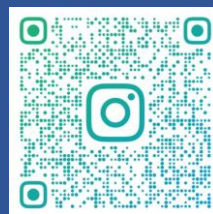
facebook



You **Tube**



Instagram



Our website

